



Context Clues in Literature

Understanding Greek and Latin affixes and roots
to determine the meaning of words



The English language is like a magnificent skyscraper.

- **Words** are the *building blocks*.
- **Greek affixes** and **roots** act as special pieces in constructing words.
- They *transform* and *elevate* language, expanding our vocabulary.
- Let's become word architects and explore the power of Greek affixes and roots!



It's time for a quick quiz

With your seatmate, match the affixes on the right side with the roots on the left side to create new words based on their meanings. Note: there may be more than one affix per root!

ROOT

1. geo (meaning: earth)
2. chrono (meaning: time)
3. micro (meaning: small)

AFFIX

- a. logy (meaning: study of)
- b. graphy (meaning: writing/recording)
- c. phone (meaning: sound)



Answers:

ROOT

1. geo (a, b)
2. chrono (a, b)
3. micro (c)

AFFIX

- a. logy
- b. graphy
- c. phone

Did you know that these are examples of Greek and Latin roots and affixes?



Let's Recall

A **root** is the main or core part of a word that carries its fundamental meaning.

An **affix** is a group of letters that we attach to a word to change its meaning or create a new word altogether.



Here are some examples of Greek and Latin roots:

Greek Root: "**Bio**"
(meaning *life*)

Latin Root: "**Port**"
(meaning *carry*)



Can you think of words that feature any of these roots? Make a list.

Were any of these words on your list?

BIO:

Biology, Biodegradable,
Biography, Biosphere,
Biodiversity

PORT:

Airport, Transport, Portable,
Import, Export, Passport,
Teleport

By identifying these root clues, you can understand and make educated guesses about the meanings of new words!





Did you notice that words with the "bio-" often relate to life, while words with the "-port" often relate to carrying or moving from one place to another?

We "build" words by combining roots and affixes.

For example: root BIO + affix LOGY

The word **biology** is derived from the Greek root **bio**, meaning "*life*," and combined with the suffix **-ology**, which means the "*study of*."

Therefore, biology is the study of living organisms.



We can also guess the meaning of new words

If you know their Greek or Latin origins!

For example: **root** **affix**
ASTRO + LOGY

Challenge:

If the meaning of the Greek root astro is "star", then what is the meaning of the word above?



Did you guess

"the study of stars?"

You're on the right track!

Astrology is the study of consulting the positions of celestial bodies (like stars) to explain human behavior and events on Earth!



Before we go, let's review:

The English language has many Greek and Latin roots and affixes.

Knowing these roots and affixes help expand our vocabulary.

We can guess the meanings of words if we know their origins!



Assignment:

Make a mini dictionary!

1. Choose three root words from this list:

aud

bene

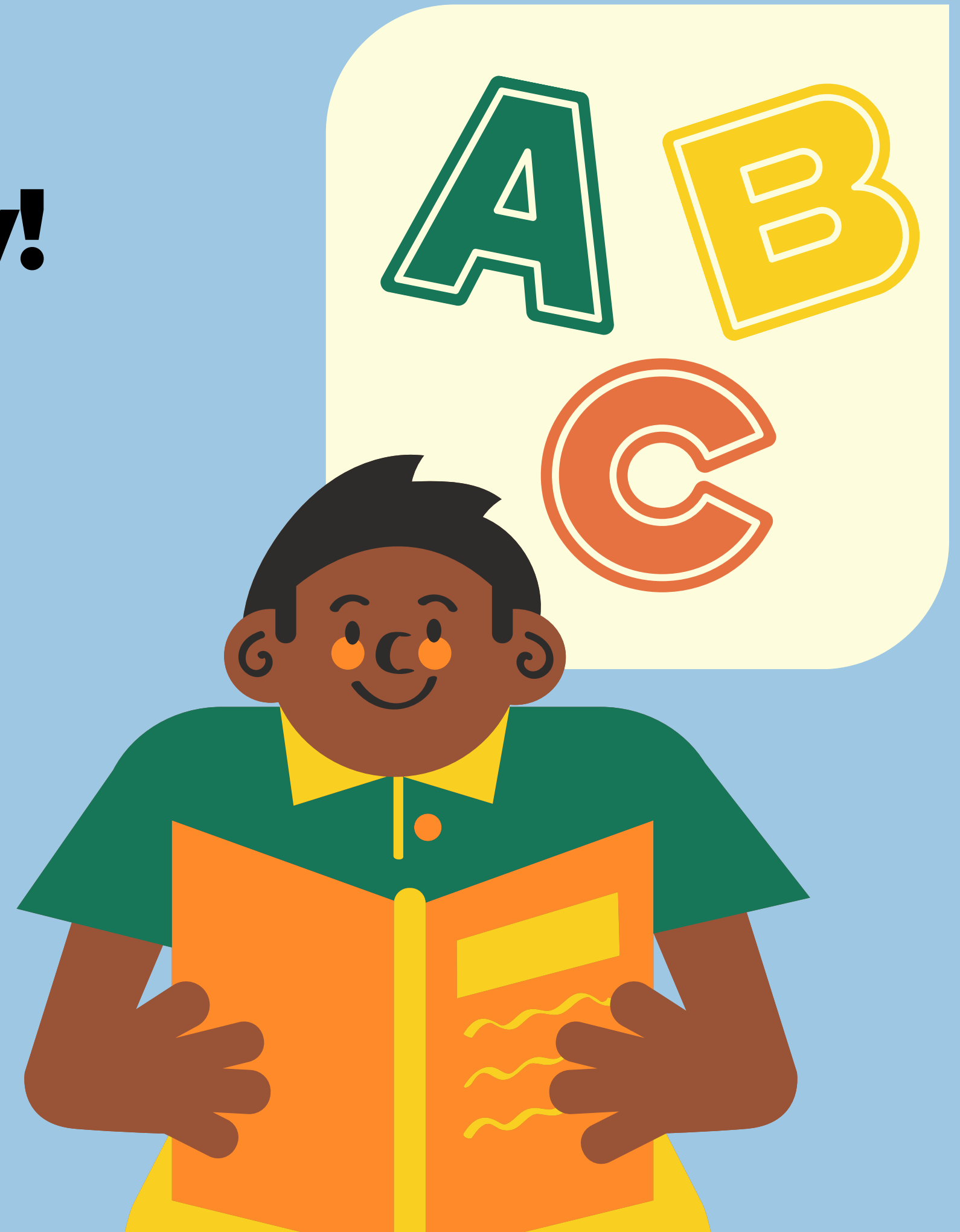
chron

spect

ped

2. For each chosen root, create a mini-dictionary entry:

- Write the root word (e.g., "aud-") and its meaning.
- Identify its origin (Latin or Greek)
- List one word that contains the chosen root and include their meanings.
- Write a sentence using one of the words to demonstrate its usage.



Resource Page

Use these icons and illustrations in your Canva Presentation. Happy designing! Don't forget to delete this page before presenting.



Try this background for online class.

*Please delete this section before downloading.





**Press
these keys
while on
Present
mode!**

B for blur

D for a drumroll

O for bubbles

U for unveil

C for confetti

M for mic drop

Q for quiet

Any number from
0-9 for a timer



Get more help at: www.btgtutoringus.com

